



KINGSTONS



Giffords Court

Melksham SN12 7DY

- First floor retirement flat
- Spacious living room
- Communal garden
- Immaculate condition throughout
- Juliet balcony
- Communal lounge

£80,000 Leasehold





Hall

Two storage cupboards, doors to living room, bedroom and bathroom.

Living Room

16'10" x 10'2"

Juliet balcony with double doors, window to front elevation, electric radiator, door to kitchen.

Kitchen

5'9" x 7'4"

Fitted with a matching range of base and eye level units with worktop space over, stainless steel sink, space for fridge and freezer, built-in eye-level electric fan assisted oven, built-in four ring electric hob, window to side elevation.

Bedroom One

13'3" x 9'4"

Window to front elevation, storage cupboard, built in wardrobe, electric heater.



Bathroom

Fitted with three piece suite comprising wash hand basin, shower enclosure and WC, electric radiator.

Outside

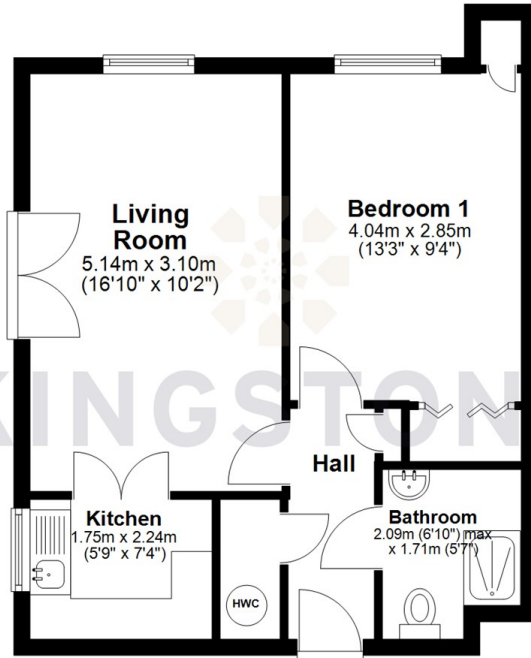
Communal lounge and gardens, laundry room with washer & driers. Lift for ease of access.



Local Authority **Wiltshire**
Council Tax Band **B**
EPC Rating **B**

Ground Floor

Approx. 42.3 sq. metres (454.8 sq. feet)



Total area: approx. 42.3 sq. metres (454.8 sq. feet)




KINGSTONS
Melksham Office

11 High Street, Melksham,
Wiltshire, SN12 6JR

Contact

01225709115
sales@kingstons.biz
www.kingstons.biz

Agents Note: Whilst every care has been taken to prepare these particulars, they are for guidance purposes only. All measurements are approximate and for general guidance purposes only and whilst every care has been taken to ensure accuracy, they should not be relied upon and potential buyers/tenants are advised to recheck the measurements.